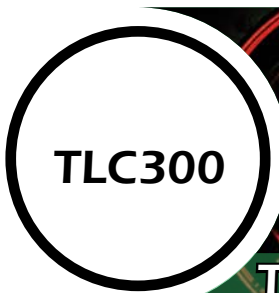


SISTEMI PER LA GESTIONE DEL TRAFFICO - TRAFFIC CONTROL SYSTEM



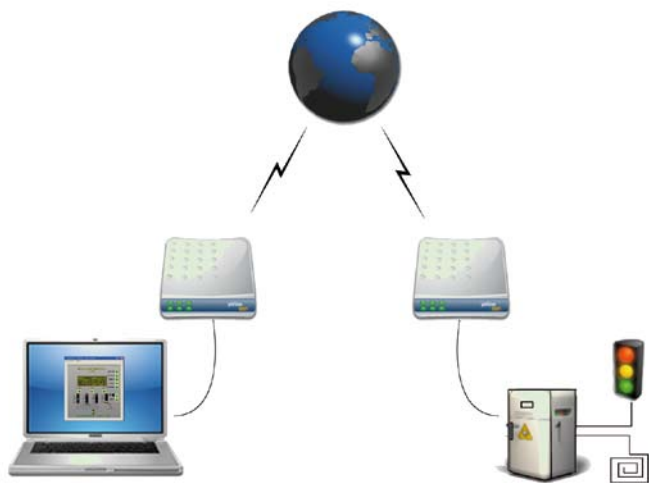
TELECONTROL SOFTWARE FOR TRAFFIC JUNCTIONS

APPLICATIONS

- Continuous monitoring of the functioning of different components of the traffic junction and automatic advice of a supervisor for example in case of maintenance (preventive or extraordinary) or replacement of components, with economic and management benefits
- The management of programs of single traffic junctions and of luminous signs in real time, according to traffic conditions, and the management of notices coming from lamps out of order
- Immediate notice to the operator in case of main alarm on the traffic junction sending an SMS on the set mobile number
- It is possible to download the set traffic plans from the controller to the PC, change and update them through a consequent upload
- Sending some Alarm Reset from the PC to the controller

DESCRIPTION

The connection between PC and peripheral controllers can be done through GSM modem or through standard telephone line. Each traffic controller type LS/300 can be provided with GSM modem and will have a specific connection number and a serial access key. The operator is allowed to enter a list of junctions and to connect only to his proper controllers' net.

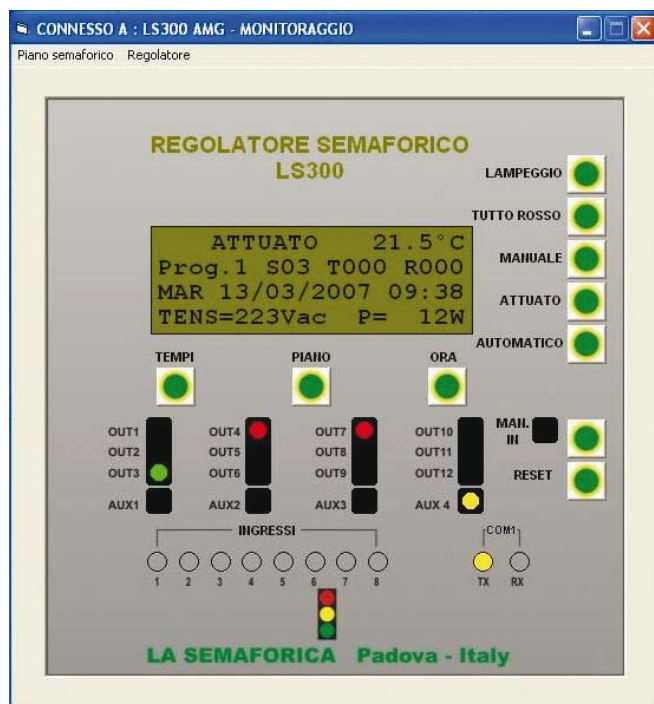


Flow chart of functioning principle

REMOTE SYNOPTIC PANEL

Once opened the connection with the traffic controller LS/300 it will be possible to view the control panel of the Software TLC300 and to carry out all the operations that usually are made on site by a technician acting from the front display of the controller:

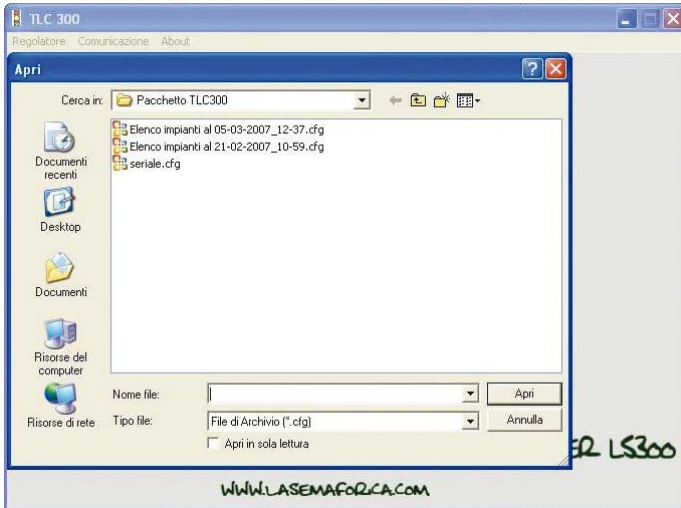
- ✓ Change of functioning mode (flashing, all red, manual, actuated, automatic, etc...)
- ✓ Alarm Reset in order to exclude possible breakdowns to be valued in a second time
- ✓ Adjustment of internal clock of the controller
- ✓ Reading of main voltage, immediate absorbed power and temperature inside controller housing
- ✓ Change of times
- ✓ Change of program insertion according to time bands
- ✓ Input forced openings (pedestrian pushbuttons, loops, radars, etc.) in order to try to exclude possible breakdowns and find out the problem from remote control



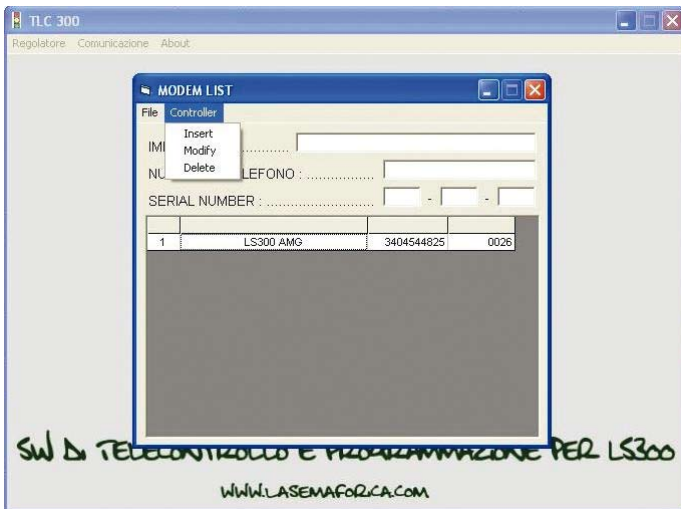


SISTEMI PER LA GESTIONE DEL TRAFFICO - TRAFFIC CONTROL SYSTEM

CONFIGURATION MODEM AND JUNCTIONS LIST



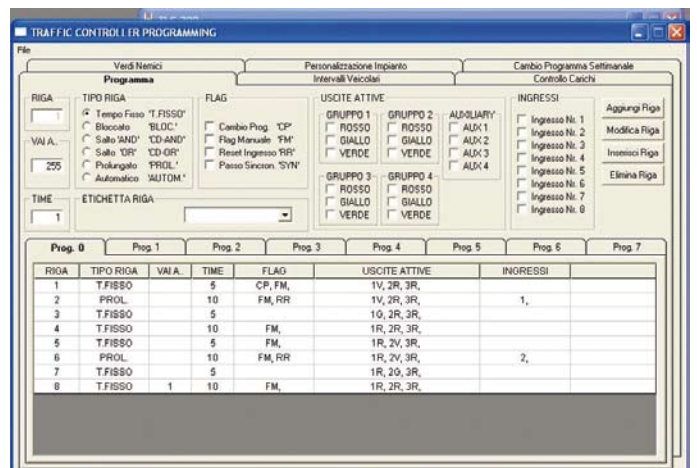
REPROGRAMMING OF TRAFFIC PLANS FROM REMOTE



Once the connection with TLC300 has been established, it is possible to carry out the upload of a new traffic plan previously done and checked.

During the program transfer a display bar will show the progress of the transmission. During this operation the traffic junction will be put automatically on flashing mode, as a matter of safety, and once the upload has been completed with relevant internal tests, the junction will start the procedure for entering the new plan, passing through the sequence of all red.

In the software TLC300 can be inserted, without additional costs and/or implementations or expansions, the list of one's own GSM modems and relevant traffic junctions connected, creating a special data base of the junctions managed through telecontrol.





SISTEMI PER LA GESTIONE DEL TRAFFICO - TRAFFIC CONTROL SYSTEM

READING OF INTERNAL ARCHIVES OF TRAFFIC CONTROLLER

Through remote access it is possible to save and show the file of the events records stored by the traffic controller (name of the customer / name of the junction and ID serial number), with a progressive number, date hour, type of event recorded, temperature, main voltage at the moment, running program and functioning mode. This function can be helpful in order to understand the rising of possible breakdowns on the junction and evaluate them with the historical data recorded, that help in finding out and solving the problems.

CONNESO A : LS300 AMG - NESSUNA OPERAZIONE IN CORSO

GESTIONE ARCHIVIO REGOLATORE

ARCHIVIO REGOLATORE : TABELLA EVENTI

CLIENTE :

NOMI DELLE VIE :

SERIAL NUMBER :

NUM	DATA	ORA	TYPE	TEMP.	VOLT.	PROG.	FUNCT. MODE
94	05/03/07	14:02:00	POWER OFF	19 °C	222 Vac	4	AUTOMATIC
95	05/03/07	14:02:30	POWER ON	19 °C	226 Vac	0	AUTOMATIC
96	05/03/07	14:02:43	FUNCT. CHANGE	19 °C	223 Vac	0	ACTUATED
97	05/03/07	14:02:00	POWER OFF	19 °C	223 Vac	0	ACTUATED
98	05/03/07	14:02:59	POWER ON	19 °C	214 Vac	0	ACTUATED
99	05/03/07	14:02:00	POWER OFF	19 °C	221 Vac	0	ACTUATED
100	05/03/07	14:03:20	POWER ON	19 °C	227 Vac	0	ACTUATED
101	05/03/07	14:08:19	FUNCT. CHANGE	19 °C	221 Vac	0	FLASHING
102	05/03/07	14:08:37	FUNCT. CHANGE	19 °C	222 Vac	0	ACTUATED
103	05/03/07	14:11:19	FUNCT. CHANGE	20 °C	223 Vac	0	AUTOMATIC
104	05/03/07	14:24:00	POWER OFF	21 °C	201 Vac	0	AUTOMATIC
105	05/03/07	14:24:22	POWER ON	21 °C	227 Vac	0	AUTOMATIC
106	05/03/07	14:26:00	POWER OFF	21 °C	221 Vac	0	AUTOMATIC
107	05/03/07	14:27:08	POWER ON	21 °C	219 Vac	0	AUTOMATIC
108	05/03/07	17:08:00	POWER OFF	21 °C	223 Vac	0	AUTOMATIC
109	05/03/07	17:08:28	POWER ON	21 °C	229 Vac	0	AUTOMATIC
110	05/03/07	17:12:08	FUNCT. CHANGE	21 °C	222 Vac	0	FLASHING

READING OF RECORDED INPUTS OF TRAFFIC CONTROLLER

The same way of events record, it is possible to transfer through TLC300 the input record for the following uses:

- ✓ Statistic evaluation of the vehicular transits (volumetric) on the junction, file is .csv format
- ✓ Analysis of the functioning of actuator devices as pedestrian pushbuttons, radars and so on...
- ✓ Percentage of exercise of the inputs within a correct evaluation of the best traffic plan

GESTIONE ARCHIVIO REGOLATORE

ARCHIVIO REGOLATORE : STORICO INGRESSI

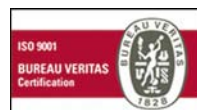
COMUNE DI : Padova

NOMI DELLE VIE : Via Tiziano Aspetti

SERIAL NUMBER : 015 - 06 - 027

NUM	DATA	TIME	IN. 1	IN. 2	IN. 3	IN. 4	IN. 5	IN. 6	IN. 7	IN. 8
0	01/02/07	10:00	10	7	13	8	26	20	1	15
1	01/02/07	10:30	8	1	50	50	18	3	18	48
2	01/02/07	11:00	9	2	19	32	35	18	1	35
3	01/02/07	11:00	11	10	10	43	37	29	5	32
4	01/02/07	11:30	13	33	32	5	10	27	10	9
5	01/02/07	12:00	13	18	48	33	2	48	33	48
6	01/02/07	12:30	11	32	18	3	2	16	32	1
7	01/02/07	15:00	9	2	16	50	1	10	11	13
8	01/02/07	15:30	10	26	13	27	3	15	8	16
9	01/02/07	16:00	12	18	1	32	35	2	16	35
10	01/02/07	16:30	13	2	16	35	32	18	48	16
11	01/02/07	17:00	11	2	18	3	32	18	3	2
12	01/02/07	17:30	9	1	2	16	32	18	48	34
13	02/02/07	08:30	8	18	3	32	18	48	33	15
14	02/02/07	09:00	10	18	19	33	10	18	9	2

AUTHORIZED DISTRIBUTOR



LA SEMAFORICA SRL
Via Ponticello, 17
35129 Padova
Italy
www.lasemaforica.com

Tel. 049 773055 - Fax 049 8074002 - e-mail: info@lasemaforica.com

Company with ISO 9001:2008 certificate for projects, installation and maintenance of luminous signs for traffic safety. Clearance SOA cat. OS09 class IV.